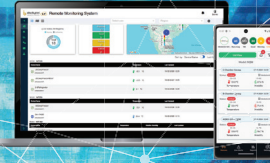


# 4G M2M SIM Temperature Data Logger for Live Remote Monitoring with Web, Mobile App, Alerts & Analytics

Model  
**IBI-MT350**  
**IBI-MT120**  
**IBI-MTD120**

4G LTE Cat-1/2G



Warehouses / Cold Chain Logistics / Transportation

Server Rooms / Data Centers



Environmental / Industrial / Manufacturing

Pharma / Diagnostics / Blood Banks



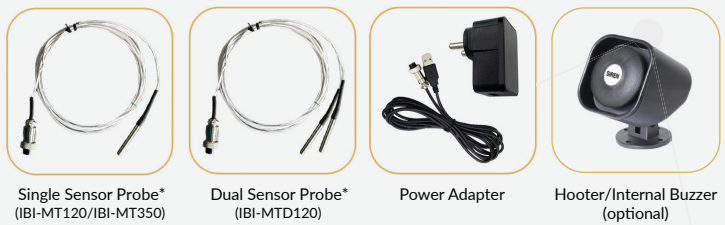
## Specifications

## 4G M2M SIM Single/Dual Channel Temperature Data Logger

<b>Temperature Range</b>	-50°C to +120°C (IBI-MT120*/IBI-MTD120 #) -200°C to +350°C (IBI-MT350) ^
<b>Accuracy</b>	± 0.5°C (-10°C to +50°C)
<b>Resolution</b>	0.1°C
<b>Connectivity</b>	4G LTE Cat1/2G fallback

\*IBI-MT120/IBI-MT350 - Single Channel Temperature Data Logger  
 #IBI-MTD120 - Dual Channel Temperature Data Logger

## Accessories



\*Note: Sensors must be purchased separately. Sensor cable length can be customized; additional charges apply.

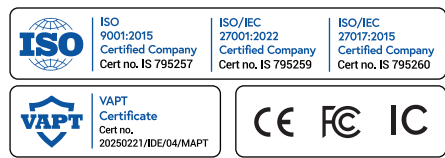
\*Software features are provided in different plans, please contact Sales for details.  
 Images are indicative only. Final product may vary

## Hardware Features

- 1.3" (128X64)(px) OLED Monochrome Graphical Display
- Internal Li-ion 4400 mAh battery with under/over voltage protection, up to 20 hrs battery back-up during power failure
- Plug & Play, Wall Mountable Device
- Polling frequency 15 minutes (default), Configurable
- Internal Storage of 90 days at a sampling frequency of 15 min.
- DC Input Voltage 5V/1A
- IP64 Rated Enclosure

## Software Features

- Web & Mobile Apps (iOS & Android)
- Real-time Visibility of Assets & IoT Parameters
- \* 21 CFR Part 11 Compliant PDF Reports | MKT Value | SMS | Audit Trail | Alarm Logs | Trend Graphs | Scheduled & On-demand Reports | Data Polling at 15 minutes Interval (default) | Live Alerts & App Push Notifications | CAPA



www.ideabytesiot.com  
 vinay.bandela@ideabytes.com  
 Call: 1800 571 5566

Ideabytes Software India Pvt Ltd, 2<sup>nd</sup> Floor, Kapil Towers, Financial District, Nanakramguda, Hyderabad-500032, Telangana, India.