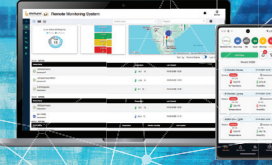


Offline 4CH/8CH Temperature Data Logger

Model
IBI-OTR4
IBI-OTR8

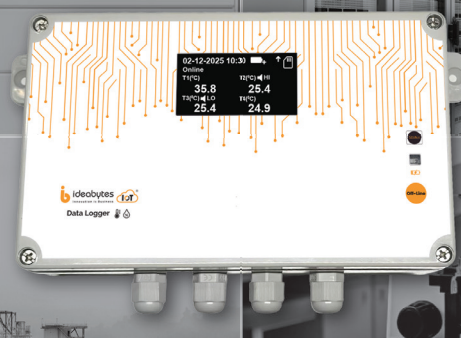


Warehouses / Cold Chain Logistics / Transportation

Server Rooms / Data Centers

Environmental / Industrial / Manufacturing

Pharma / Diagnostics / Blood Banks



Specifications

Offline 4 Channel / 8 Channel Temperature Data Logger

Input	RTD	PT100 2/3/4 Wire PT1000 2/3/4 Wire (Optional)
Temperature Measuring Range		PT100 : -200°C to 550°C PT1000 : -200°C to 550°C (Optional)
Power Supply		DC 5V/1A
Accuracy		0.5°C (0.05% of Full Scale)

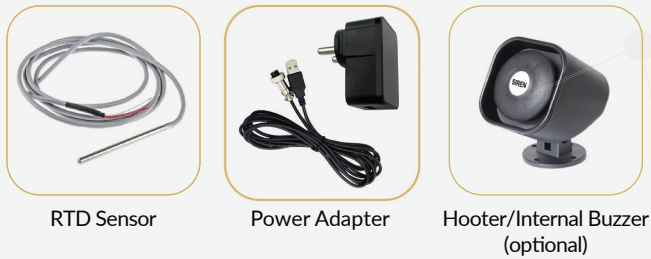
Hardware Features

- 2.4" 128X64(px) OLED Monochrome Graphical Display
- Internal Li-ion 5200 mAh battery with under/over voltage protection, up to 18 Hrs battery back-up during power failure
- Plug & Play Device
- Parameters can be Configured using Smart Phone or Laptop Over Wi-Fi by Connecting to Data Logger
- 40,000 Records can be Stored in Internal Memory

Software Features

- CSV Data Reports can be downloaded directly from the Datalogger by connecting a Computer or Mobile through Wi-Fi
- Download reports using USB Cable
- * 21 CFR Part 11 Compliant PDF Reports | MKT Value | Audit Trail | Alarm Logs | Trend Graphs | Data Polling at 15 minutes Interval (default) | CAPA

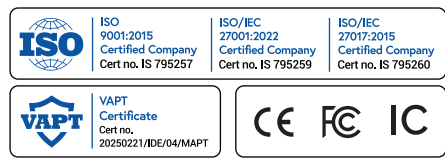
Accessories



*Note: Sensors must be purchased separately. Sensor cable length can be customized; additional charges apply.

*Software features are provided in different plans, please contact Sales for details.

Images are indicative only. Final product may vary



www.ideabytesiot.com
sales@ideabytesiot.com
Call: 1800 571 5566

Ideabytes Software India Pvt Ltd, 2nd Floor, Kapil Towers, Financial District, Nanakramguda, Hyderabad-500032, Telangana, India.