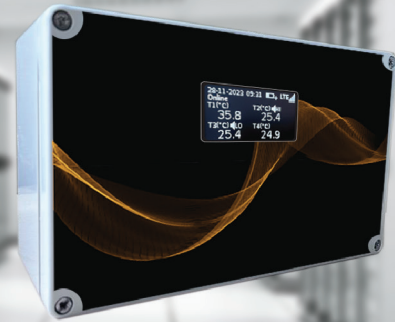


4 Channel Temperature Data Logger for Live Monitoring with Mobile Apps, Alerts & Analytics

Model
IBI-WRTD4
IBI-MRTD4



- IBI-WRTD4** Wi-Fi 802.11 b/g/n 2.4 GHz
- IBI-MRTD4** 4G LTE CAT1 Technology with In-built M2M SIM

Specifications

Input	RTD	PT100 2/3/4 Wire PT1000 2/3/4 Wire (Optional)
Temperature Measuring Range		PT100 : -200°C to 550°C PT1000 : -200°C to 550°C (Optional)
Power Supply		DC 5V/1A
Accuracy		0.5°C (0.05% of Full Scale)

Hardware Features

- 2.4" 128X64 OLED monochrome Graphical Display
- Internal Li-Ion 5200 mAh battery with under/over voltage protection, up to 18 Hrs battery back-up during power failure
- Plug & Play Device
- Parameters can be Configured using Smart Phone or Laptop Over Wi-Fi by Connecting to Data Logger
- 40,000 Records can be Stored in Memory in case of Network Failure

Note: RTD Sensors not included with Data Logger, which need to purchase separately.
RTD Sensor cable length can be customized, Extra charges applicable

Software Features

- Pharma, Food, Warehouse, Chemical & Laboratory Equipment Monitoring application
- Different Views (Dashboard / Map / List), Analytics, Device Management, User Management, Alerts Management,
- Maintenance Schedules & Ticket Management
- Custom Reports (21CFR Part 11 Compliant) PDF, CSV
- MKT Value, Audit Trail, Alarm Log, Trend Graphs
- Data Polling Interval: 15 minutes (default) - User configurable
- SMS: Optional
- Alerts & Push Notifications
- Web & Mobile App (iOS & Android)



www.ideabytesiot.com
vinay.bandela@ideabytes.com

Call: 1800 571 5566

Ideabytes Software India Pvt Ltd, 11th Floor, Unit 1, Kapil Towers, Financial District,
Nanakaramguda, Hyderabad-500032, Telangana, India.